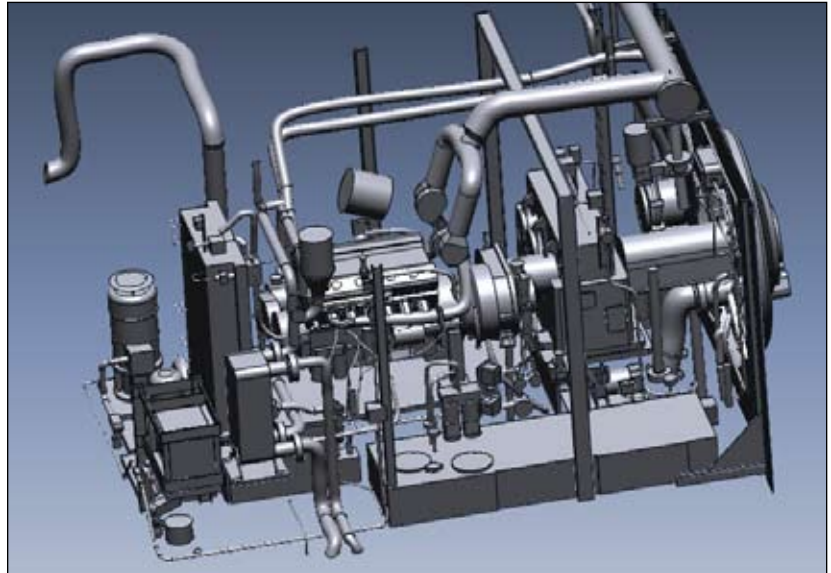


Client: Belcan Corporation  
 Location: West Bengal, India  
 Completion: 2009

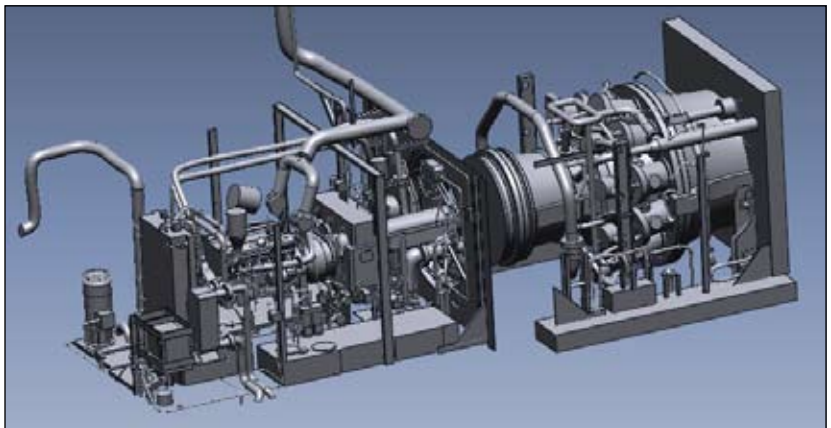
**M**ckim & Creed provided turbine scanning services for an industrial project in West Bengal, India. Surveyors used high-speed 3-D laser scanners to capture the as-built condition of the inside and outside of the gas turbine, accessory module and gas fuel module as outlined in the GE ordering document. McKim & Creed provided a parasolid model to GE Engineering and Drafting for review within 15 business days from when the laser scanning was conducted.



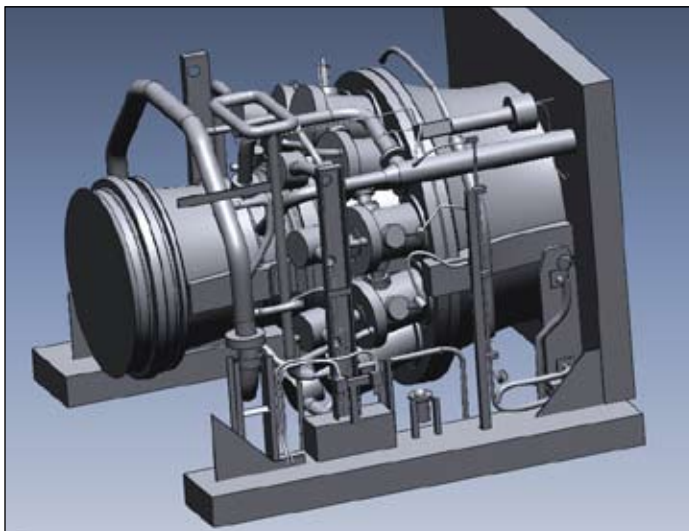
Using a Leica HDS 6000 to scan existing conditions outside the gas turbine building, McKim & Creed's scan crew was able to capture all the piping, pipe racks, trenches and accessories associated with the gas turbine outside the turbine building in less than eight hours. The data collected will be used in the design of additional piping and buildings in support of the gas turbine.



*This 3-D model created from the scanned data shows the starter engine for the combustion turbine.*



*This model of the starter engine and combustion turbine assembly was used by designers to route new fuel lines to existing nozzles and to place a proposed fuel accessory module.*



*This model shows an isolated section of the combustion turbine.*

